

NYC EARLY CHILDHOOD MENTAL HEALTH NETWORK

Helping Young Children THRIVE!



**NEW
EMPLOYEE
ORIENTATION**

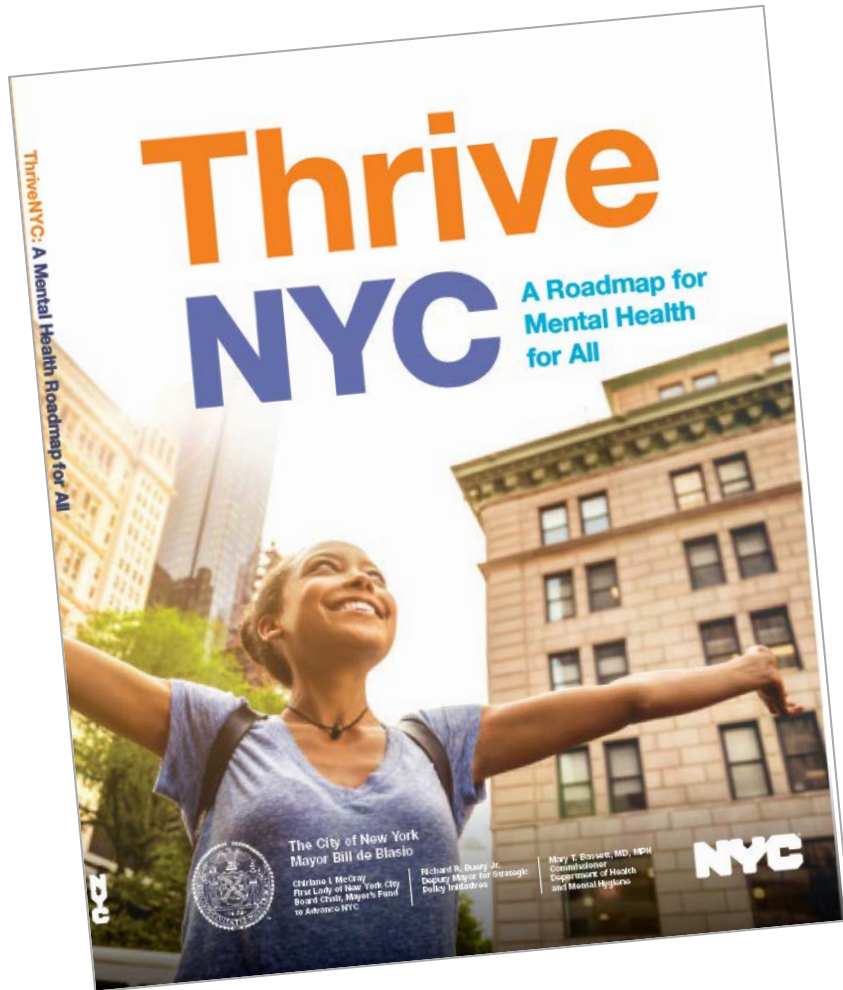
December 2018








Key Topics of the Webinar

- ❖ Describe ThriveNYC and the Early Childhood Mental Health (ECMH) Network
- ❖ Provide an overview of services and training
- ❖ Provide an overview of assessment tools
- ❖ Provide a user's overview of the TTAC website

ThriveNYC – “ACT EARLY”



Six Guiding Principles

-  **1. Change the Culture**
Make mental health everybody's business. It's time for New Yorkers to have an open conversation about mental health.
-  **2. Act Early**
Give New Yorkers more tools to weather challenges and capitalize on opportunities by investing in prevention and early intervention.
-  **3. Close Treatment Gaps**
Provide New Yorkers in every neighborhood—including those at greater risk—with equal access to care that works for them and their communities, when and where they need it.
-  **4. Partner with Communities**
Embrace the wisdom and strengths of local communities by collaborating with them to create effective and culturally competent solutions.
-  **5. Use Data Better**
Work with all stakeholders to address gaps, improve programs, and create a truly equitable and responsive mental health system by sharing and using information and data better.
-  **6. Strengthen Government's Ability to Lead**
Affirm City government's responsibility to coordinate an unprecedented effort to support the mental health of all New Yorkers.

... investing in prevention and early intervention.

ThriveNYC Social-Emotional Learning Initiative

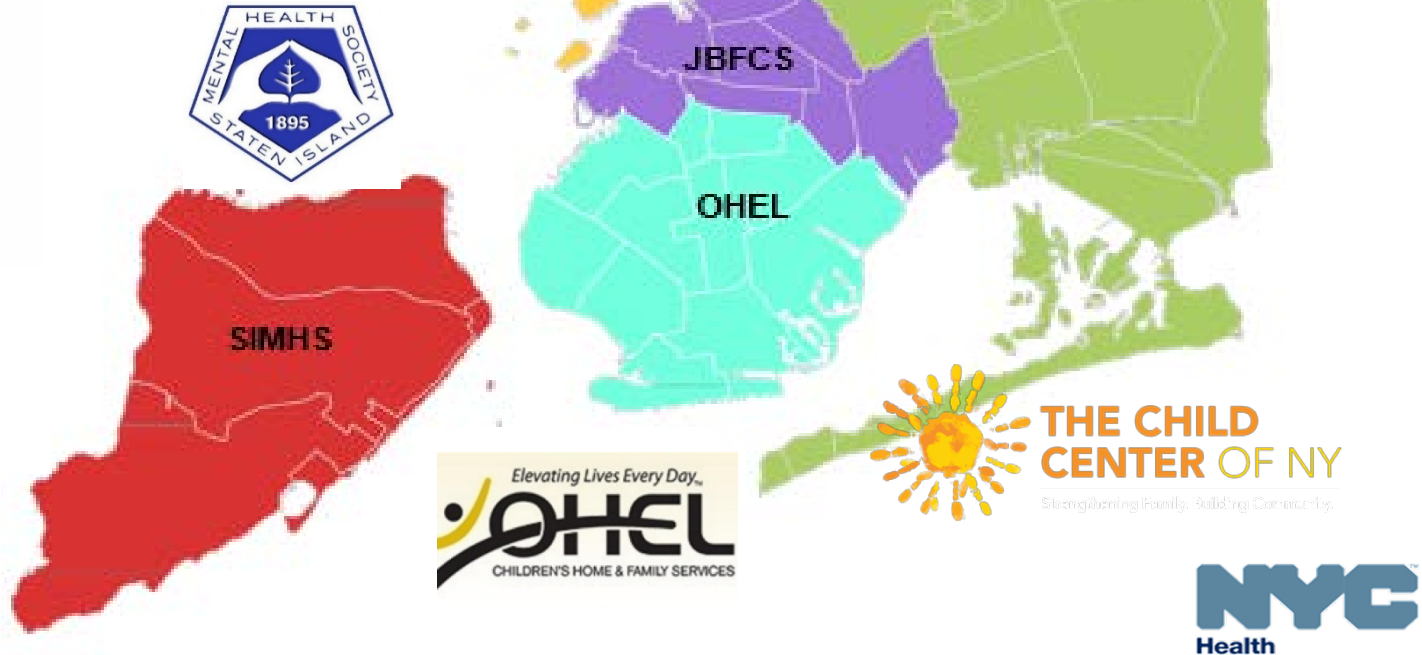
- ❖ Coordinated **3-agency strategy**: ACS, DOE, DOHMH
- ❖ Goal: To ensure a coordinated continuum of safe, nurturing, and predictable home, child care and school environments with **responsive adults** who support the social and emotional development of young children in NYC



- ❖ Each agency works to build the capacity of its workforce and of families to help young children learn social and emotional skills
- ❖ DOHMH supports children with mental health needs and their families through the ECMH Network

The ECMH Network

Fatima 



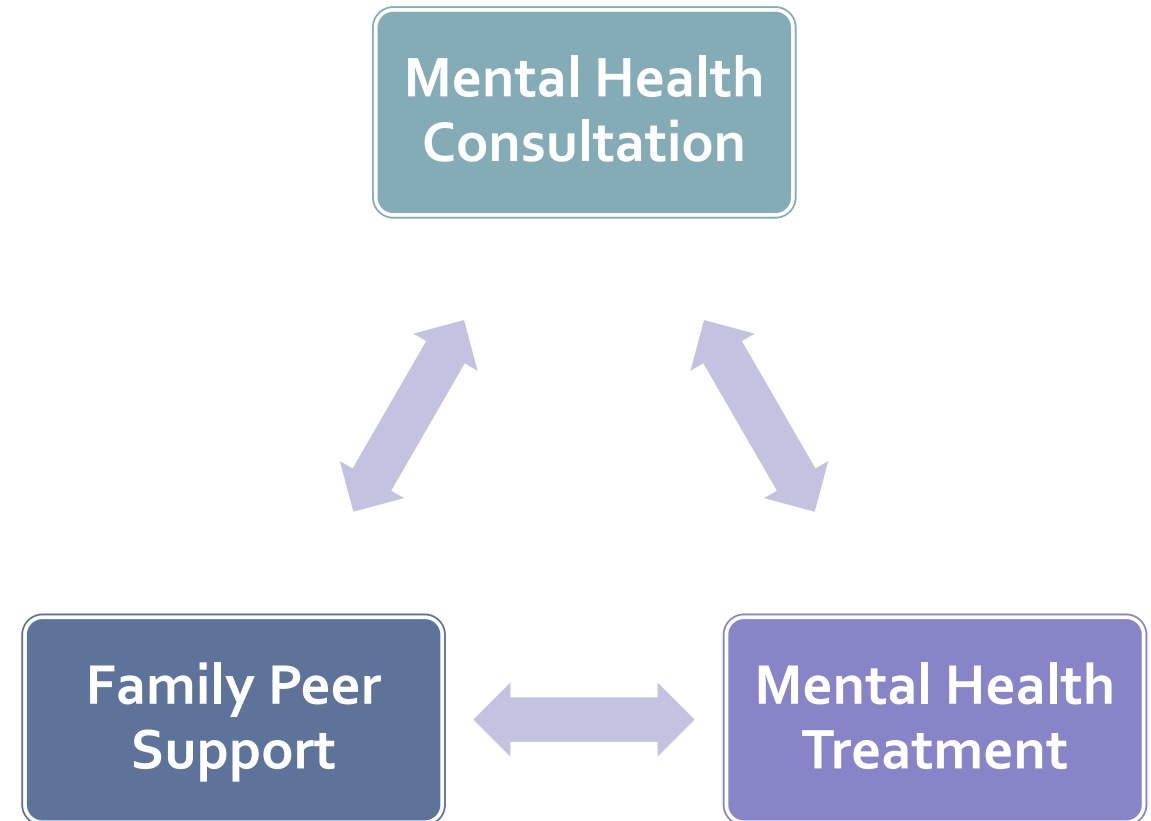
NYC Early Childhood Mental Health **TTAC** Training and Technical Assistance Center

A COLLABORATION BETWEEN

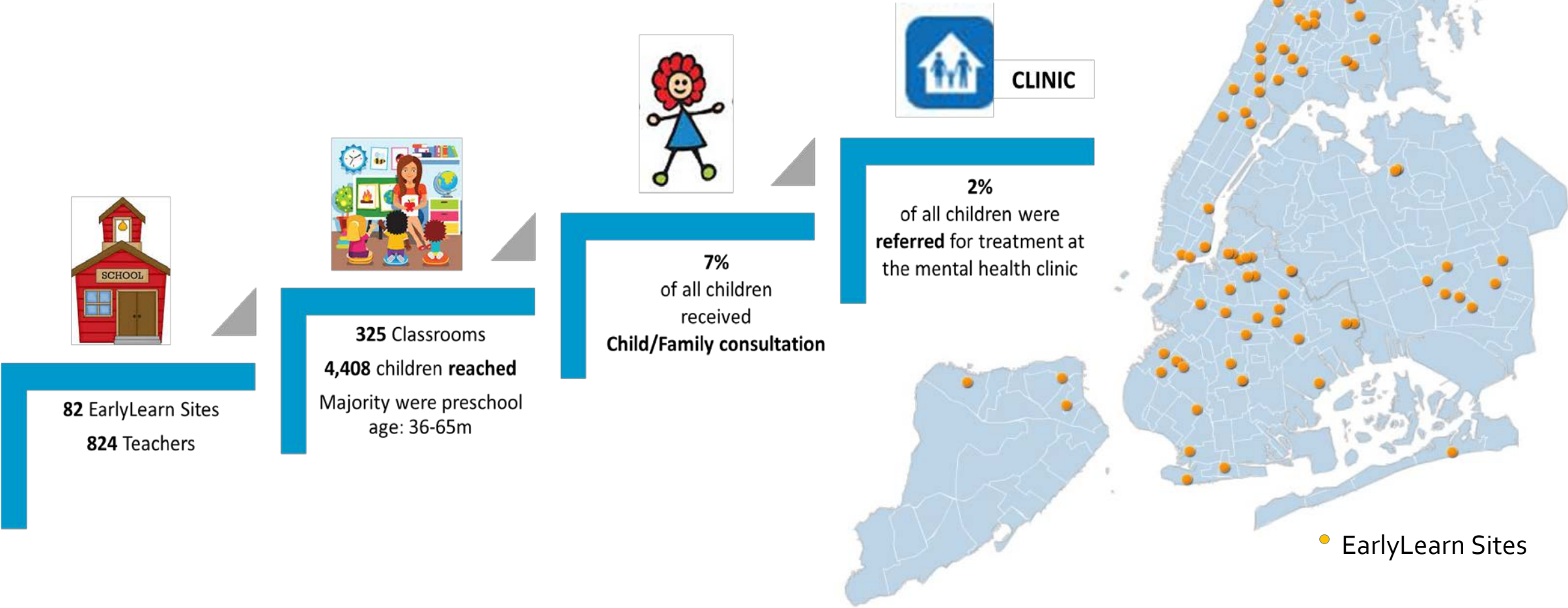


Early Childhood Therapeutic Center (ECTC) Services

- ❖ Mental Health Consultation
 - ❖ To staff, teachers, and parents/caregivers at early care and education sites
- ❖ Mental Health Treatment
 - ❖ To children birth to five, their siblings, and parents/caregivers
- ❖ Family Peer Support
 - ❖ To parents/caregivers of children birth to five

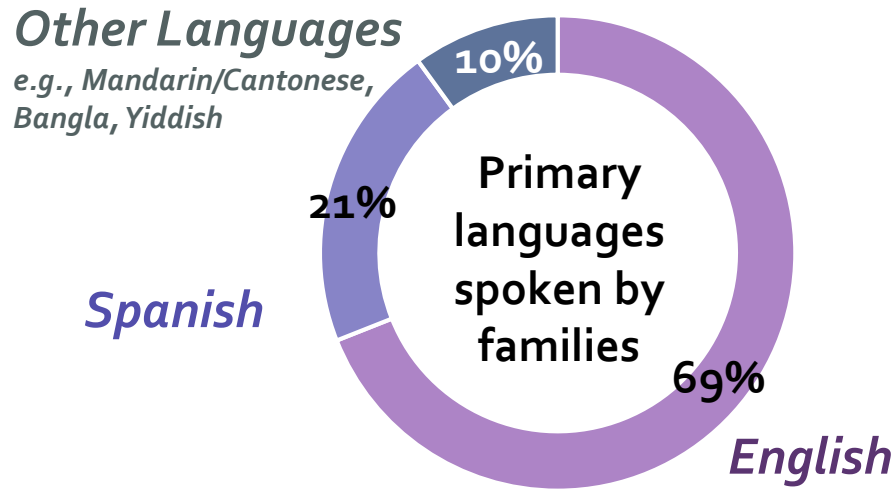


Mental Health Consultation

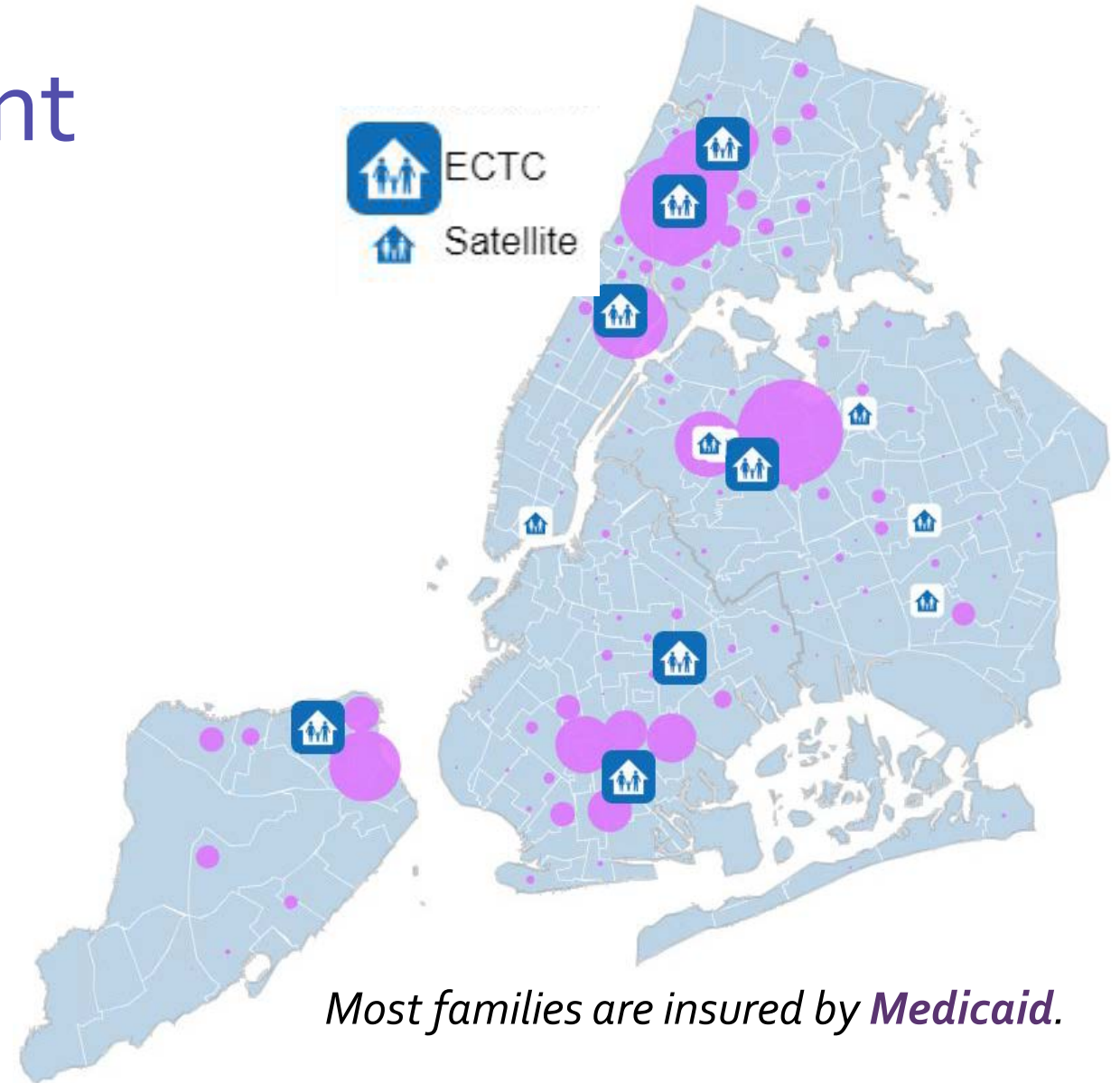


2,532 Early care and education staff, teachers, and parents/caregivers received **Mental Health Consultation Services** since the Network launched

Mental Health Treatment



1,628 children birth to five and their families received **Mental Health Treatment Services** since the Network launched



*Most families are insured by **Medicaid**.*

Family Peer Support



Clinic
61%



EarlyLearn
30%



Community/Other
7%



Home
2%

1,462

caregivers received

Family Peer Support

Services since the
Network launched

Services were primarily in clinics and at
EarlyLearn sites.

The top two services:

- ❖ Engagement and bridging
- ❖ Providing emotional support



Training and Technical Assistance Center (TTAC): A Collaboration

❖ New York Center for Child Development

- ❖ Major provider of early childhood mental health services in New York
- ❖ Expertise in informing policy and supporting the field of Early Childhood Mental Health through training and direct practice

❖ McSilver Institute for Poverty, Policy and Research

- ❖ At New York University
- ❖ Houses the Community and the Managed Care Technical Assistance Centers (CTAC/MCTAC)
- ❖ TTAC website, registration, and infrastructure support

TTAC Approach

TTAC is tasked with building capacity and competencies of mental health professionals and early childhood professionals in family serving systems to identify and address the social-emotional needs of young children and their families across NYC

Tiered model of training with varying intensities; linked to network of service providers

Flexible and **responsive to needs** of practitioners and community mental health needs

Multi-year process of trainings, and **alignment** with NYS-AIMH competencies for endorsement

Community of practice approach guided by best practices; emphasizes business sustainability

What is Infant and Early Childhood Mental Health (I/ECMH)?

The developing capacity of the child from birth to 5 years of age to

- ❖ form close and secure adult and peer relationships;
 - ❖ experience, manage and express a full range of emotions;
 - ❖ and explore the environment and learn –
- ... all in the context of family, community and culture".



Cohen J, Oser C, Quigley K. Making it Happen: Overcoming Barriers to Providing Infant-Early Childhood Mental Health, ZERO TO THREE Policy Center; April 2012

Why is I/ECMH Important?

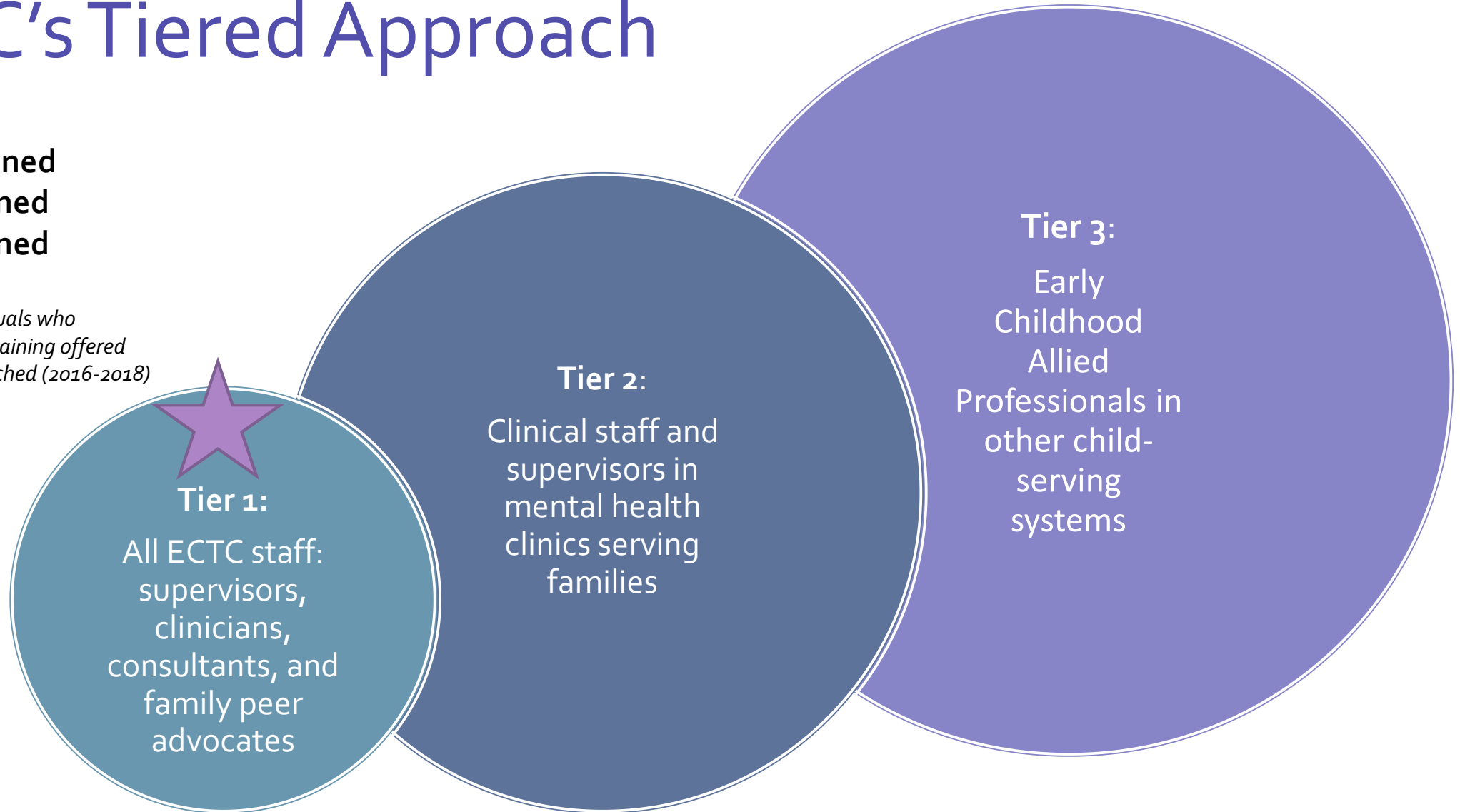
- ❖ *In NYC, one in four children under the age of 5 has a parent or caregiver with concerns about their development* (NYC DOHMH. Epiquery: NYC Interactive Health Data System – CHEWDS 2015)
- ❖ 85% of brain development occurs before age 5*
- ❖ Between 9.5 and 14 percent of US children ages 0-5 experience social-emotional problems that negatively affect their functioning, development, and school readiness (Brauner & Stephens, 2006)
- ❖ The quality and consistency of early relationships impacts young children



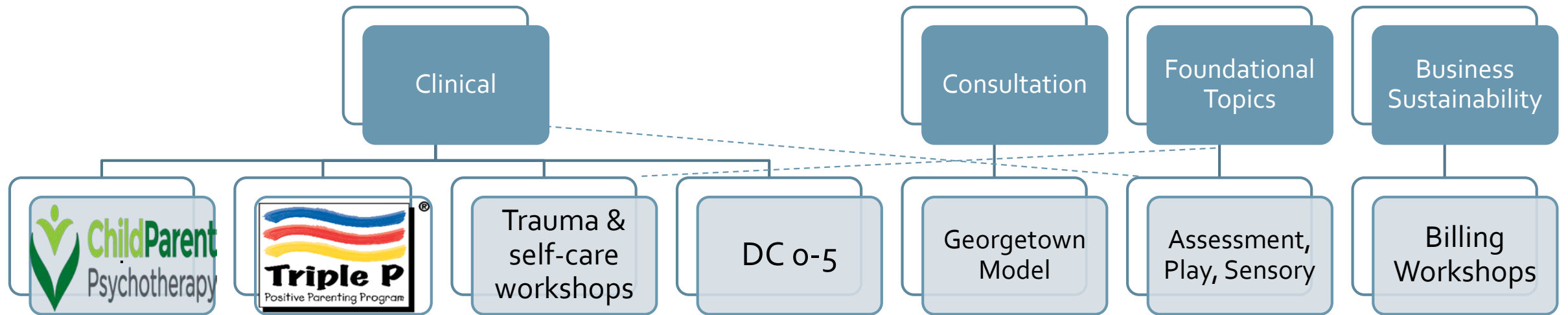
TTAC's Tiered Approach

Tier 3: 611 trained
Tier 2: 393 trained
Tier 1: 193 trained

Total number of individuals who attended at least one training offered since the Network launched (2016-2018)



Evidence-Based Practices and trainings



Child-Parent Psychotherapy & Triple P Positive Parenting Program

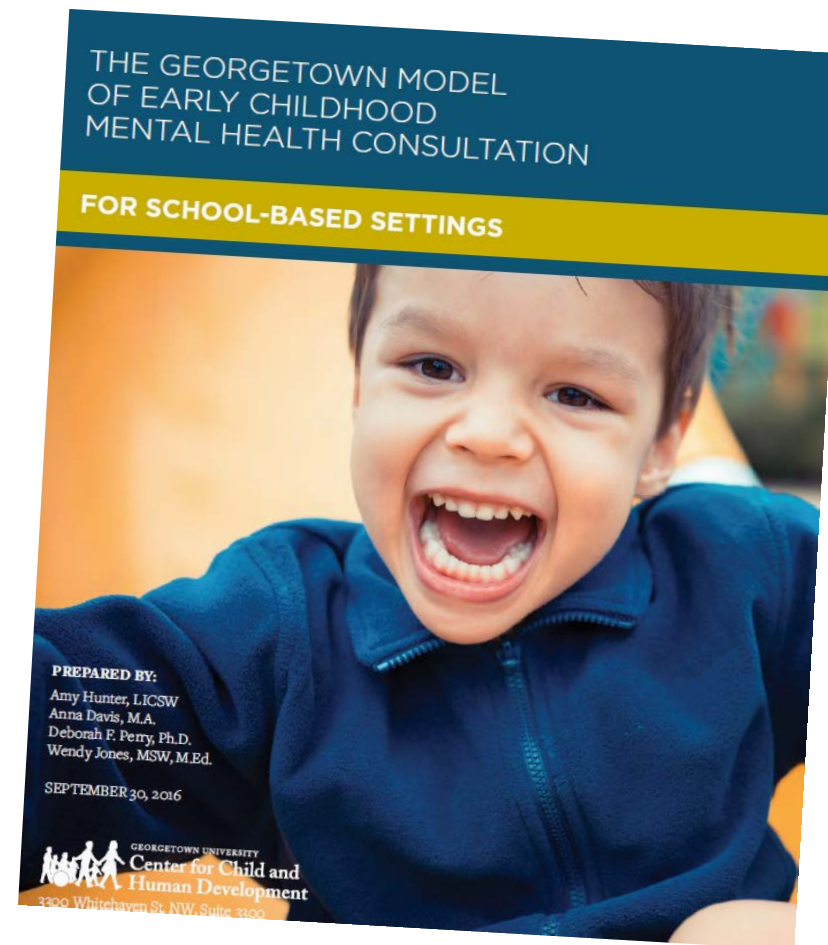


- ❖ Child Parent Psychotherapy (CPP) is a dyadic model for children age 0-5 who have experienced
 - ❖ traumatic events and/or
 - ❖ mental health, attachment and/or behavioral problems
 - ❖ Based on attachment theory
 - ❖ <http://childparentpsychotherapy.com/about/>
- ❖ The Triple P-Positive Parenting Program® (Triple P) is a multi-tiered system of evidence-based education and support for parents and caregivers of children ages 0-12
 - ❖ Triple P interventions increase parents' ability to deal with a full range of behavior problems
 - ❖ <http://ttacny.org/page/ectc/past-ectc-events/article/triple-p-introductory-webinar/>.

Georgetown Model of ECMH Consultation

- ❖ In-person trainings
- ❖ Ongoing coaching calls
- ❖ <https://www.ecmhc.org>
- ❖ NYC Resource Manual for consultants:

<https://ctacny.org/sites/default/files/ECTC%20Manual.pdf>



Infant Mental Health Competencies & Endorsement

- ❖ **New York State Association for
Infant Mental Health (NYSAIMH)**
- ❖ **Strengthening the Knowledge,
Competencies and Skills of the
Infant-Early Childhood Mental
Health Workforce**



Competency Guidelines
**Endorsement for Culturally Sensitive,
Relationship-Focused Practice Promoting
Infant Mental Health®**





Showing our impact

Assessments ... track the progress of the service the Network provides

- ❖ Informs program planning
- ❖ Informs quality improvement
- ❖ Provides evidence for policy change that affects young children and their families
- ❖ Demonstrates reach and impact of services provided by the Network



Mental Health Consultation Assessments



Overview of Assessments Tools – Mental Health Consultation

Name of Tool	Description of Tool
Classroom Demographic	This form describes the classroom that is receiving mental health consultation services
Teaching Pyramid Observation Tool for Preschool Classroom (TPOT)	This tool will assess the mental health climate/environment of the classroom that is receiving mental health consultation services
Classroom Strength and Difficulties Questionnaire (SDQ)	This tool will assess the burden of children’s behaviors on the teacher and the classroom
Goal Review Sheet	This form allows the consultant and lead teacher to identify up to three goals for the consultation period, as well as the activities that are needed to attain the goals.
The Devereux Early Childhood Assessment (DECA)	This tool assesses protective factors and screens for potential risks in the social and emotional development of young children
Consultation Notes	This form is used to track the time the consultant spends providing mental health consultation and the activities performed by the mental health consultant
Mini Teacher Impact Survey	This tool will allow the teacher to provide feedback regarding the consultation services received at the consultation mid-point
Teacher Impact Survey	This tool will allow the teacher to provide feedback regarding the consultation services received at the end of consultation
Administrator Impact Survey	This tool will allow the program director to provide feedback regarding the consultation services received at the end of consultation

Mental Health Treatment Assessments



Overview of Assessments Tools – Mental Health Treatment

Name of Tool	Description of Tool
Patient Health Questionnaire (PHQ-9)	screens for depression in the primary caregiver of the child
Adverse Childhood Experience (ACE)	It measures the number of adverse childhood experiences experienced by the primary caregiver
Parenting Stress Index-Short Form (PSI-SF)	This tool evaluates the magnitude of stress in the parent-child relationship
The Devereux Early Childhood Assessment (DECA)	This tool assesses protective factors and screens for potential risks in the social and emotional development of young children
Parenting and Family Adjustment Scales (PAFAS)	This tool assesses the changes in parenting practices and parental adjustments using the Triple P model
Supplemental Questions	These questions gather supplemental demographic information about the child
Family Assessment of Care Survey (FACS) / Consumer Assessment of Care Survey (CACS)	This tool provides family/patient feedback on the services provided by the ECTC

Family Peer Support Reporting



Overview of Family Peer Support Reporting

Name of Tool	Description
Family Peer Advocate (FPA) Note	This form is used to track the time the family peer advocates spends with the family and the service that the family peer advocate provides

TTAC Website



NYC Early Childhood Mental Health TTAC Training and Technical Assistance Center
 TTAC is funded by the New York City Department of Health and Mental Hygiene through ThriveNYC.

ASK TTAC 

ABOUT US TRAINING & TECHNICAL ASSISTANCE RESOURCES  ECTC PORTAL EVENTS

Events

Wednesday, June 13, 2018
 Early Childhood Mental Health Network Celebration

Wednesday, June 13, 2018
 Sensory Integration and Self-Regulation: Sensory Contributions to Young Children's Social-Emotional Development

view more >

CONTACT US 

A COLLABORATION BETWEEN

NEW YORK CENTER FOR CHILD DEVELOPMENT

McSILVER INSTITUTE
 FOR POVERTY POLICY AND RESEARCH

NYU | SILVER SCHOOL OF SOCIAL WORK

NYC DOHMH Bureau of Early Intervention E-Learning Modules

The Early Childhood Mental Health Network

Foundations of Social-Emotional Development in Infants and Toddlers

Foundations of Social-Emotional Development in Infants and Toddlers
 Learn More

Get to know the Early Childhood Therapeutic Centers (ECTCs)
 Learn More

TTAC
 A COLLABORATION BETWEEN

NEW YORK CENTER FOR CHILD DEVELOPMENT

McSILVER INSTITUTE
 FOR POVERTY POLICY AND RESEARCH

NYU | SILVER SCHOOL OF SOCIAL WORK

NYC Health

❖ Important Links:

❖ [Resources Page](#) - for general community, mental health consultation, and clinical resources

❖ [Events Page](#) - registration for events open to the public

❖ [ECTC Portal](#) - for information about training and TA, specifically for ECTC staff

❖ Username: ectc

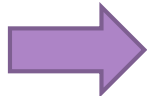
❖ Password: portal

ECTC Portal

NYC Early Childhood Mental Health TTAC Training and Technical Assistance Center
TTAC is funded by the New York City Department of Health and Mental Hygiene through [ThriveNYC](#). ASK TTAC

ABOUT US TRAINING & TECHNICAL ASSISTANCE RESOURCES **ECTC PORTAL** EVENTS

Resources for ECTC staff



ECTC Portal
Training Curriculum
Past ECTC Events
Learning Collaboratives

CONTACT US

A COLLABORATION BETWEEN

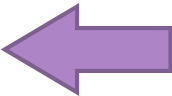


ECTC Portal

Please use the sidebar for helpful information regarding past events, learning collaboratives, and training materials for ECTCs. **Upcoming events can be found below.** Events open to the public can be found under the [events](#) menu.

New Resource Available! Mental Health Consultation Manual for Early Care & Education Staff:

This manual provides information, strategies, and resources for supporting and promoting children's development and social and emotional well-being in early care and education centers. Consultants can give the manual to teachers they are currently working with and leave copies when they move on from a site. It also includes information for staff about managing their own stress while doing their important work with young children. Access the manual [here!](#)

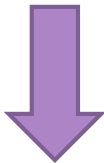


Highlights and updates

Obtaining CEUs for TTAC trainings:

If a training offers CEUs, you will be able to obtain them 3-5 business days following the date of the event. Please follow the instructions below:

1. Visit the NYU Silver CE Online Portal: <https://sswforms.es.its.nyu.edu/>
2. If you do not have an account, please create one at the link above.
3. Log on to the "Continuing Education Online Portal for the NYU Silver School of Social Work" page, click on "All Events & Programs" tab



Scroll down for upcoming events!



TTAC Website Walkthrough

Who We Are: DOHMH



Shirley Berger, Director, Office of Prevention, Family and Community Support

Fatima Kadik, Project Director, Early Childhood Mental Health Services

Janice Okeke, Evaluation and Quality Improvement Specialist

Elleanor Eng, Program Coordinator

Rochelle Macer, Early Intervention Mental Health Liaison

Who We Are: TTAC



Gil Foley, EdD , Clinical Co-Director
Nichole Aiello, Program Coordinator
Evelyn Blanck, LCSW, Director
Susan Chinitz,, PsyD , Clinical Co-Director
Ana Rodriguez, PhD, CPP Trainer
Michael Gordon ,Executive Director NYCCD



Morgan McGuire, Policy Analyst;
Andrew Cleek, PsyD, Chief Program Officer; and
Meg Baier, LMSW, Assistant Director of Strategic Operations

How to Contact Us

- ❖ For questions about the ECMH Network:

- ❖ Fatima Kadik, email: fkadik@health.nyc.gov

- ❖ For questions about trainings and registration:

- ❖ Email: ttac.info@nyu.edu

- ❖ For questions about competencies and endorsement:

- ❖ Rochelle Macer, email: rmacer@health.nyc.gov

- ❖ To access the TTAC website:

- ❖ TTACNY.org

- ❖ For Continuing Education Units (CEUs):

- ❖ Visit the NYU Silver CE Online Portal

- <https://sswforms.es.its.nyu.edu/>

- ❖ For any issues: call 212-998-5973 or email silver.continuingeducation@nyu.edu